



## LAYOUT & PRICING

<u>SPACE</u>	<u>DIMENSIONS</u>	<u>PRICE/MONTH</u>
RETAIL WALL A/B/C	STARTS AT 3X7X13"	\$250/\$225/\$275
RETAIL BUILT-INS A/B	STARTS AT 17.5"X6X13.5"	\$175/\$200
RETAIL CUBES	STARTS AT 22"X18"	\$50/MONTH
BOUTIQUE SHELVING	35"X89"X12"/4 SHELVES	\$150/MONTH
BOUTIQUE BUILT-IN/PULL-OUTS	STARTS AT 22"X18"	\$150/MONTH
BOUTIQUE RACK	NO SMALLER THAN 36"	\$100/MONTH
CONSIGNMENT	BY PIECE	\$0/MONTH
COMMUNITY TABLES	BY PIECE	ADDITIONAL \$25
CUSTOM SIZE/PANTRY	CASE-BY-CASE BASIS	PLEASE INQUIRE

PLEASE NOTE: THE MAP BELOW IS FOR REFERENCE ONLY AND DOES NOT REFLECT THE EXACT POSITION OF TABLES & SPACES. DIMENSIONS ARE APPROXIMATIONS AND READ WIDTH X HEIGHT X DEPTH.

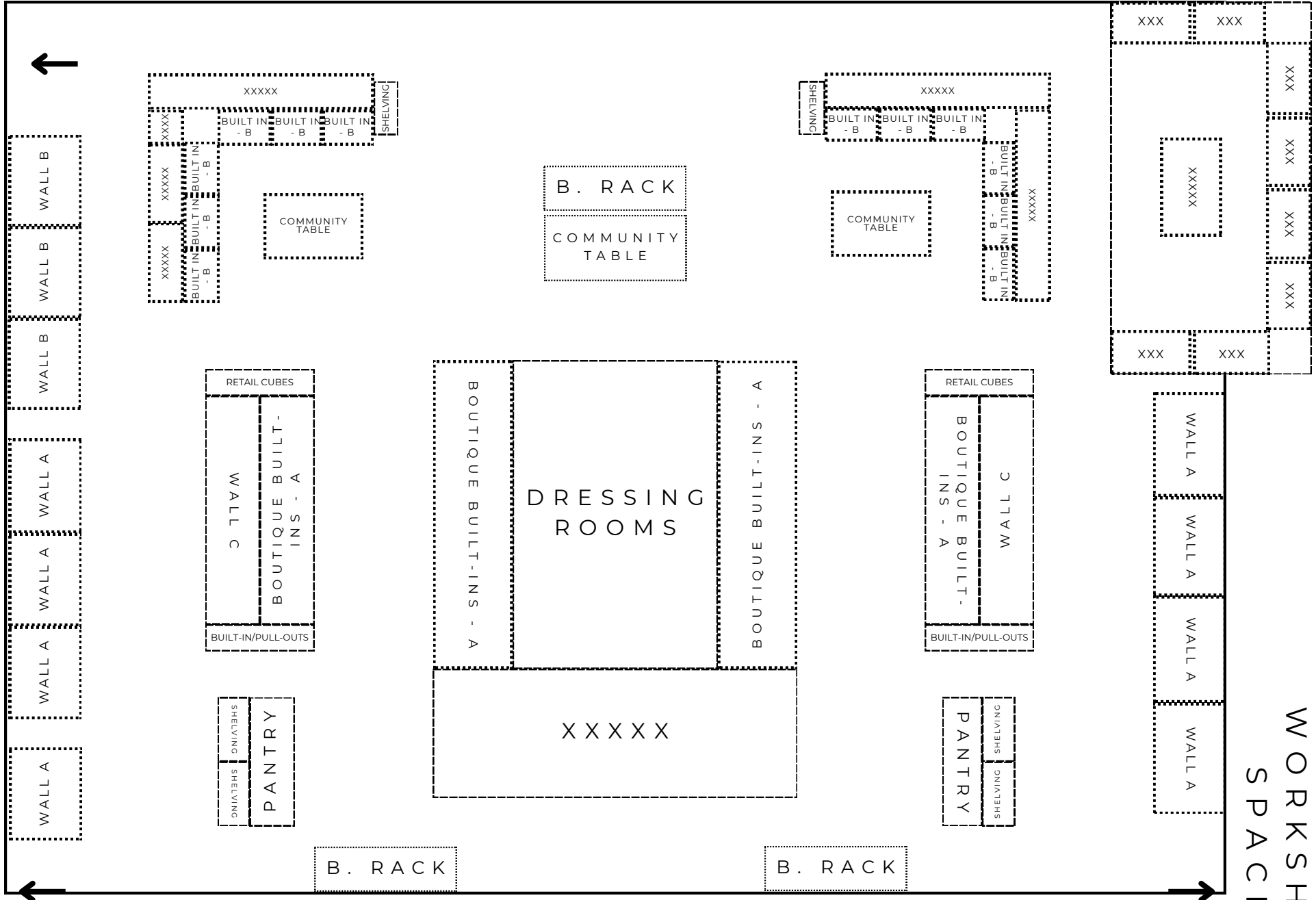
ENTRANCE +  
CHECKOUT +  
CONSIGNMENT

BATHROOMS  
+ STORAGE

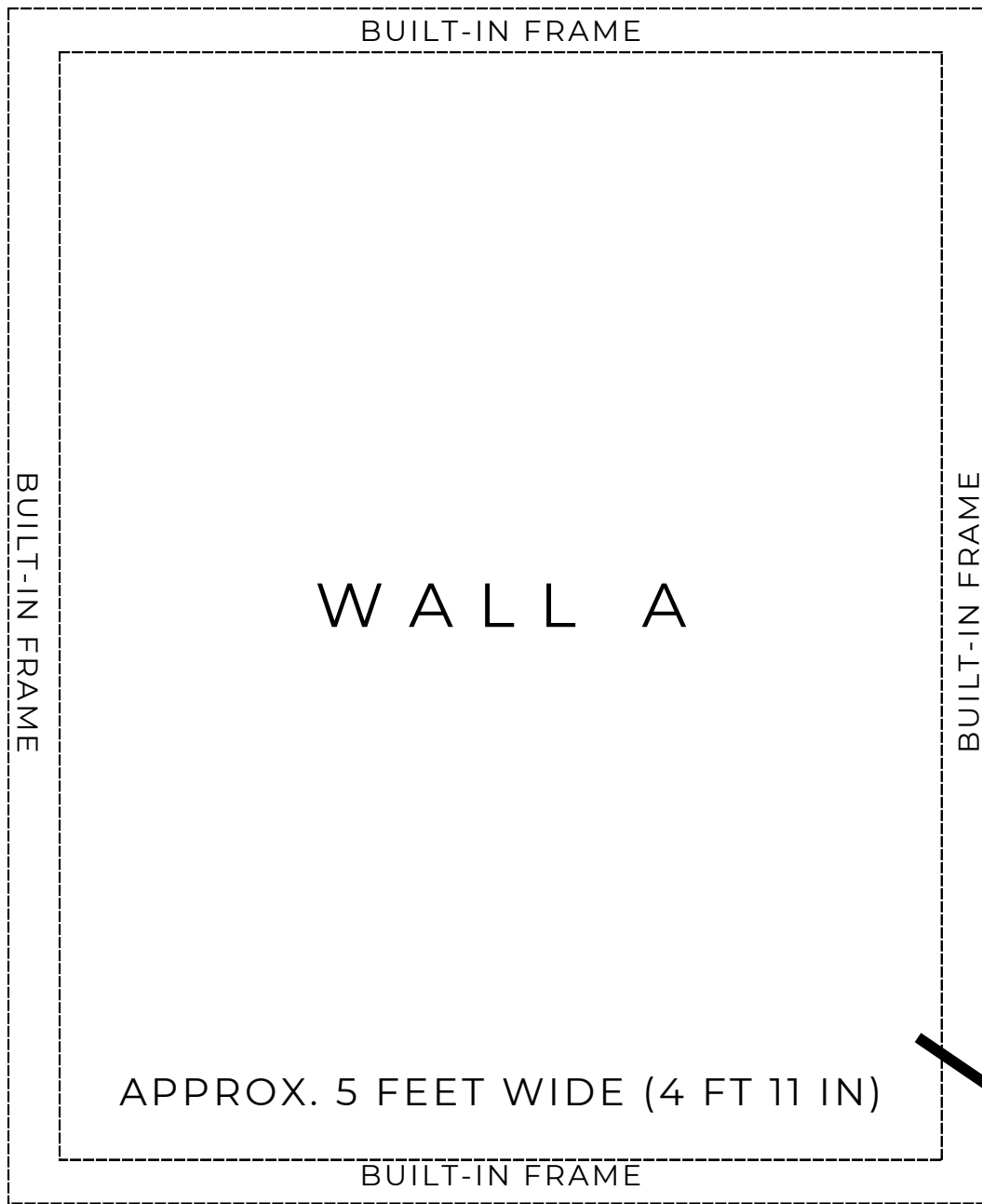
↑ OFFICES ↑

↓ PATIO ↓

WORKSHOP  
SPACE



WALL A



WALL A

BUILT-IN FRAME

BUILT-IN FRAME

BUILT-IN FRAME

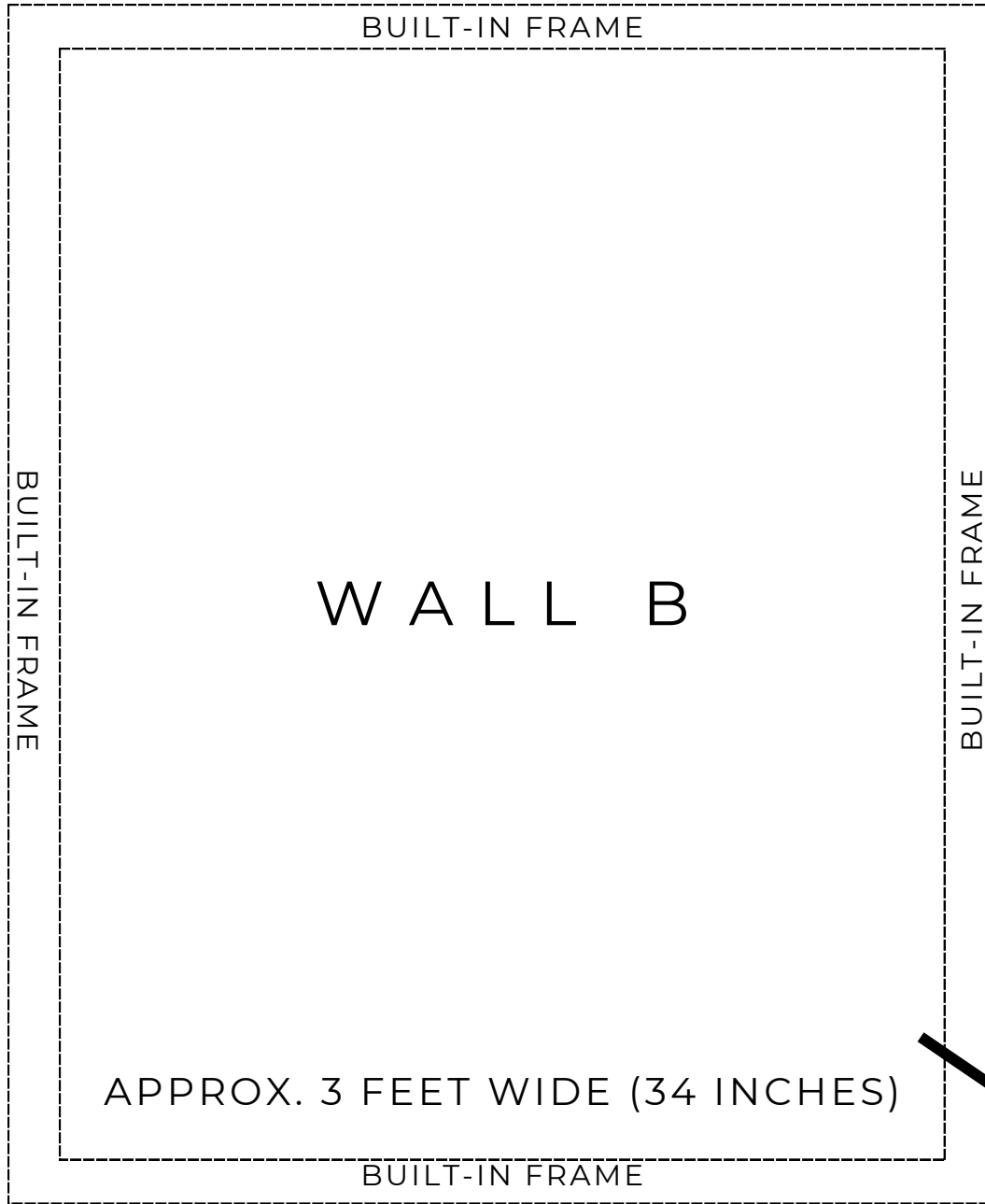
APPROX. 7 FEET TALL

APPROX. 5 FEET WIDE (4 FT 11 IN)

BUILT-IN FRAME

APPROX. 13 INCHES DEEP

W A L L B



APPROX. 7 FEET TALL

BUILT-IN FRAME

BUILT-IN FRAME

BUILT-IN FRAME

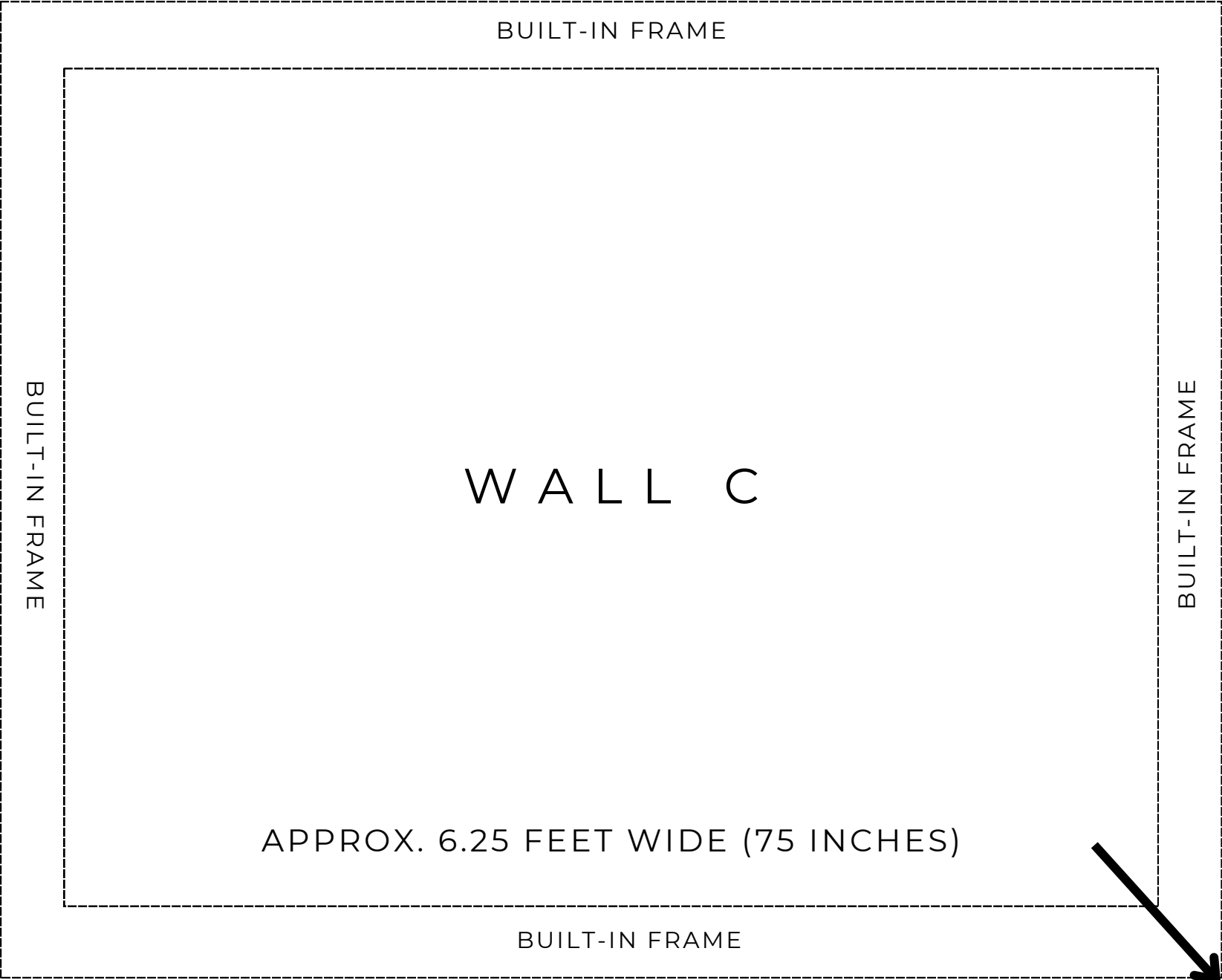
BUILT-IN FRAME

APPROX. 3 FEET WIDE (34 INCHES)

W A L L B

APPROX. 13 INCHES DEEP

WALL C



BUILT-IN FRAME

WALL C

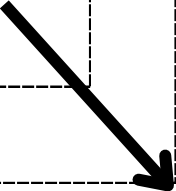
BUILT-IN FRAME

BUILT-IN FRAME

APPROX. 6.5 FEET TALL

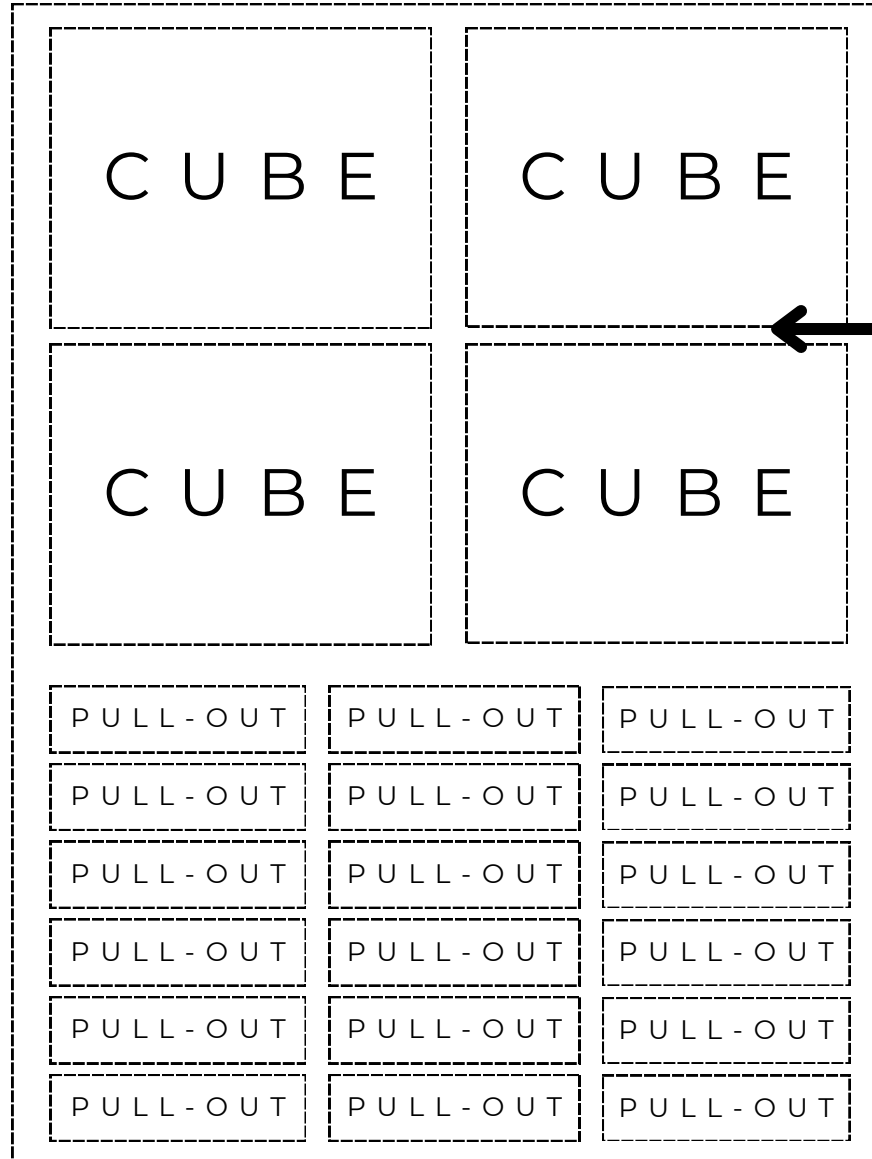
APPROX. 6.25 FEET WIDE (75 INCHES)

BUILT-IN FRAME



APPROX. 26 INCHES DEEP

BUILT-IN/PULL OUTS

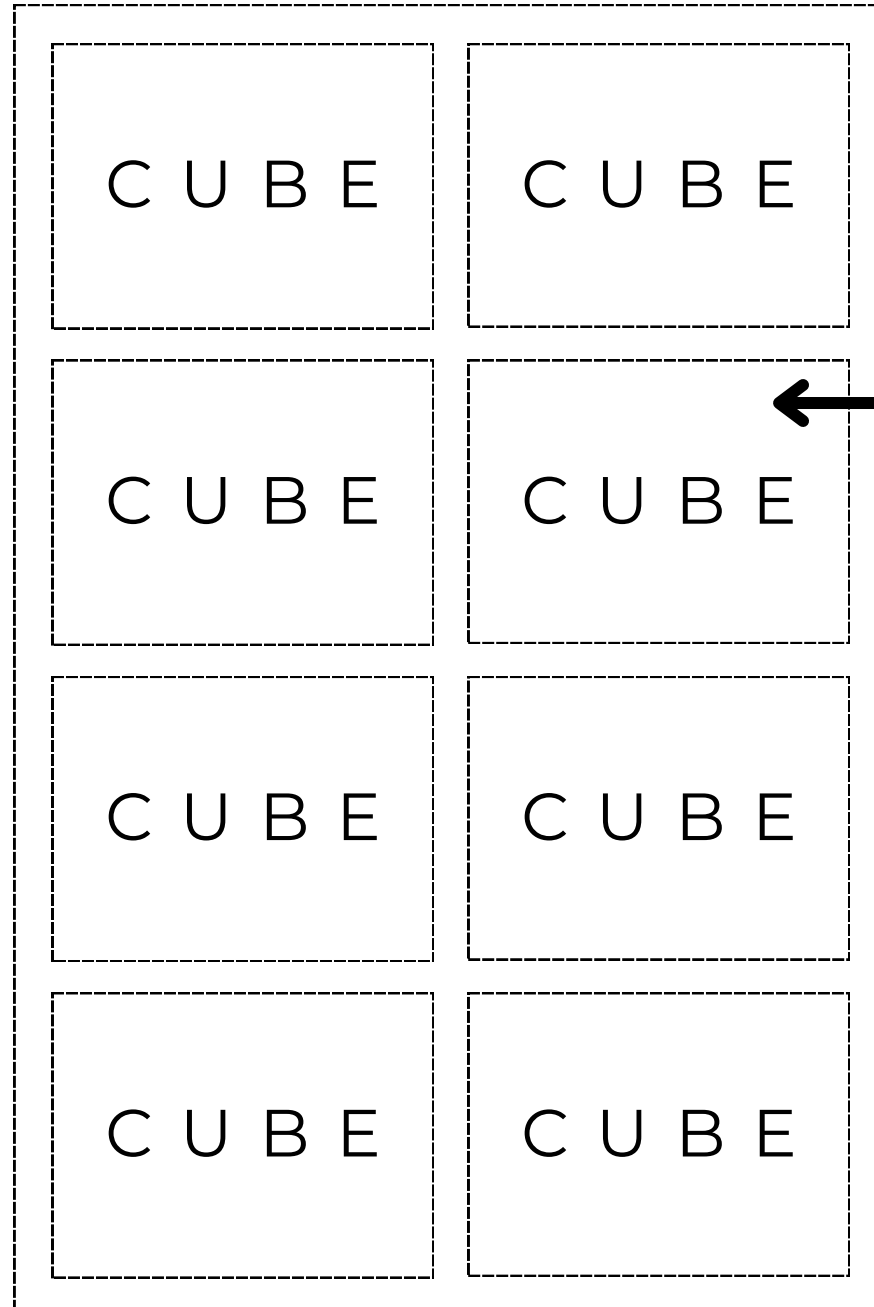


EACH CUBE IS APPROX. 18" TALL AND APPROX 22" WIDE

(I DID NOT MEASURE THE DEPTH, SO I WILL UPDATE WHEN I HAVE THAT INFO)

I FORGOT TO MEASURE A PULL-OUT, BUT THEY LOOK LIKE THEY WOULD FIT FOLDED T-SHIRTS.

RETAIL CUBES



EACH CUBE  
IS APPROX.  
18" TALL  
AND APPROX  
22" WIDE

(I DID NOT  
MEASURE  
THE DEPTH,  
SO I WILL  
UPDATE  
WHEN I  
HAVE THAT  
INFO)

RETAIL SHELVING

THE UNIT IS 89"  
TALL AND  
APPROX. 33" WIDE



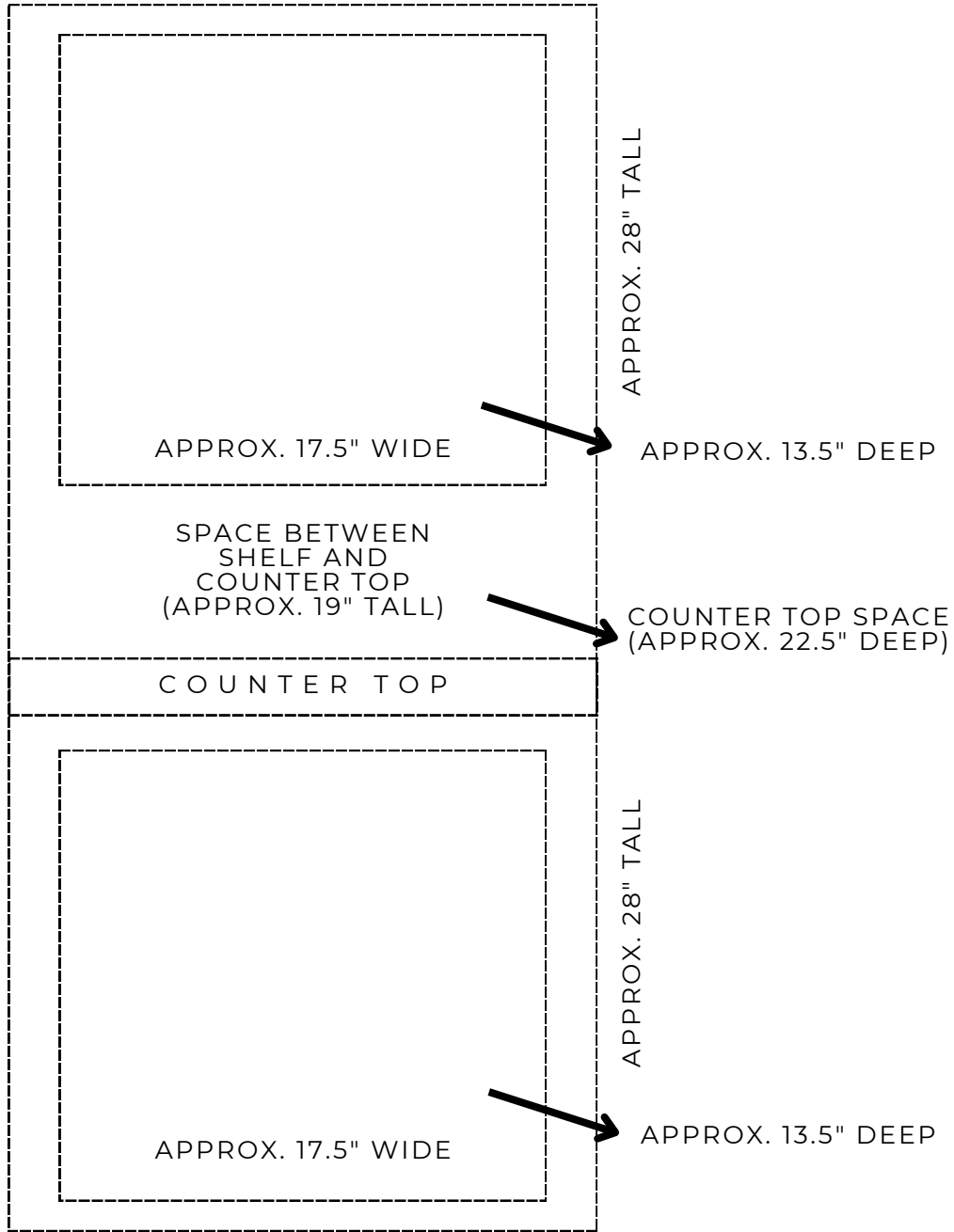
EACH SHELVING  
UNIT WILL COME  
WITH 4 SHELVES;  
THE SHELVES  
ARE ADJUSTABLE

ADDITIONAL  
SHELVES WILL BE  
\$10 EACH

EACH SHELF IS  
APPROX. 32 5/8"  
WIDE X 11 3/4"  
DEEP



BUILT-IN A



BUILT-IN B

